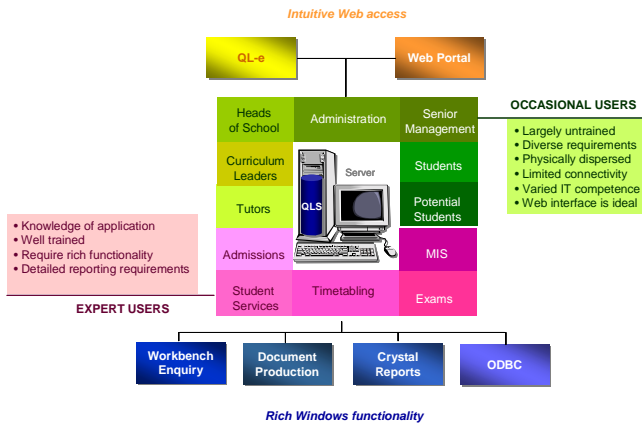




IMPROVED INFORMATION AVAILABILITY - for expert & occasional users



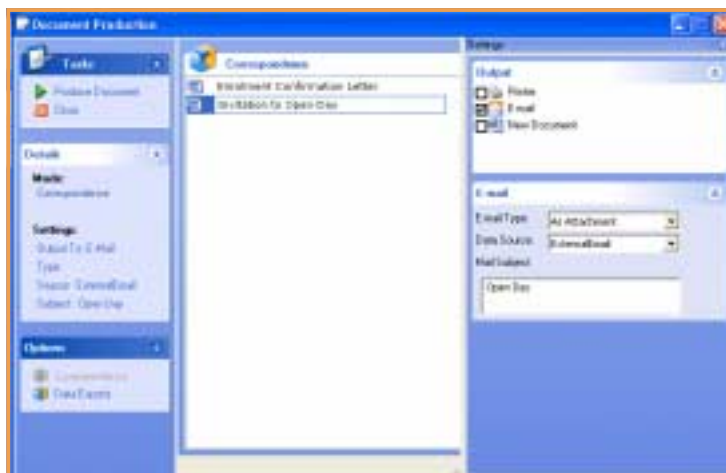
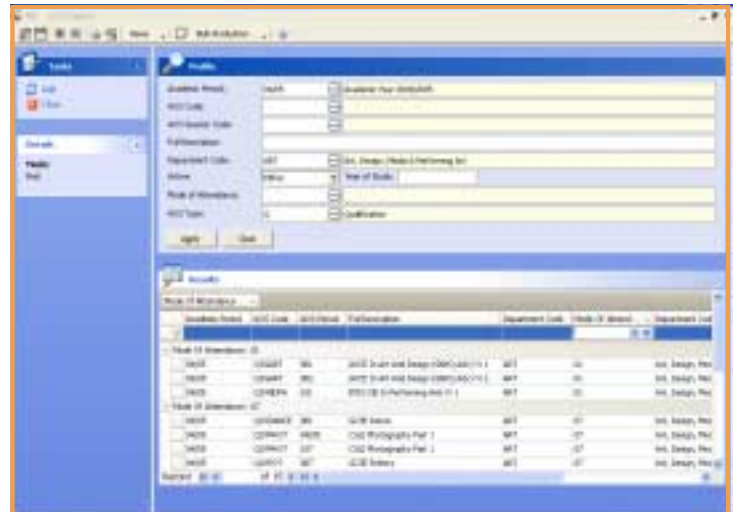
Across the Agresso QLS suite of software there is a wide range of facilities for accessing and enquiring on data. Different options are available depending on the needs and capabilities of the user. Users could be classified as 'Expert' and 'Occasional'. Expert users are those in MIS, Admissions, and Examinations etc and this group require detailed enquiry and reporting options. They have an intimate knowledge of the system and its coding conventions and are trained in the system and its reporting techniques.

For expert users sophisticated tools are required. In contrast, occasional users have had little or no training on the system and make less frequent visits to the system. Here, web based solutions provide a better means of providing information. The diagram opposite summarises the options available within Agresso QLS.

The Agresso QLS Workbench

The workbench displays records within a grid format. The workbench is a standard feature across all modules and is highly configurable in terms of both the records that are viewed and the fields that are displayed. In terms of retrieving records users have primary filters which are displayed above the workbench and then secondary filters via the filter bar within the grid. The fields which are displayed can be defined by the user via simple pick lists. These fields can then be re-arranged, column sizes changed, and then sorted, grouped and aggregated using totals, sums, averages, maximums, minimums etc.

Unlimited views can be defined and saved for retrieval and these views can be system wide, workgroup specific or for a particular user. Views can be printed or exported to Excel for further analysis.



Document Production

The Document Production module allows the flexible extraction of data for presentation via Microsoft Office applications such as Word (mail merge). Users can define which fields are to be extracted from the database using the wizard based Data Translation Centre (DTC). The resultant export file can then be linked to a standard mail merge template. Documents can be produced for individual students or as a batch and an audit is maintained of all documents produced. Documents can be printed directly or automatically attached to emails

Standard Reports

The standard reporting solution in Agresso QLS is based on Crystal Reports. Each time a report is produced the user is presented with 2 prompts. The first prompt is used to define the range of data to be included in the report. The second prompt is used to determine how the output should be presented. These options include on-screen, spooled, directly to the printer, into the workbench or exported to Excel. Furthermore, the template for each standard report can be exported from Agresso QLS, amended and imported back to provide college-defined presentation in addition to the default report.

Application Summary

Overall Summary

| Stage Code | APP | CO | JNT | V | Total |
|------------|-----|----|-----|----|-------|
| Sum | 42 | 24 | 26 | 11 | 103 |
| Total | 42 | 24 | 26 | 11 | 103 |

Summary by Course

| Stage Code | APP | CO | JNT | V | Total |
|------------|-----|----|-----|---|-------|
| Sum | 4 | 1 | 2 | 2 | 15 |
| Total | 4 | 1 | 2 | 2 | 15 |

ODBC

For complete flexibility, the expert user can access the Agresso QLS database using any report writing tool and ODBC. Typical tools for this include Microsoft Access and Excel but any industry standard reporting tool can be used.

Agresso QL-e

For occasional users Agresso has developed the web browsing tool, Agresso QL-e. This provides access to information for a college-wide audience using internet explorer and a simple series of mouse clicks. It requires no knowledge of the database or coding conventions and therefore users require minimal training. For further details of Agresso QL-e please refer to the Agresso QL-e datasheet.

Further College defined access to information can be provided via the Agresso QLS web Portal. Please refer to this datasheet for details

