

Features:

- ◆ All recognised EDI standards supported
- ◆ Agresso QL supports all three EDI standards
 - ◆ FEERDUM (Format for the Exchange of Examinations Related Data)
 - ◆ EDEXCEL
 - ◆ City and Guilds (CGLI)
- ◆ Simple to use Import and export Wizards for data transfer.
- ◆ For EDEXCEL a full history of unit test attempts.
- ◆ Submissions can be made by an EDI carrier e-mail or through a web site such as the CGLI 'Walled Garden'

Agresso is constantly working with Examination Boards to consolidate and enhance Electronic Data Interchange to/from Agresso QL Students.

As part of this process, Agresso QL Students has been enhanced to fully support all current EDI transfer methods including FEERDUM (Format for the Exchange of Examination Related Data), Edexcel Vocational Awards and City & Guilds (CGLI).

All processes are controlled through wizards and include Base Data import, entry submissions and import of results.

GCSE's & A Levels

The EDI standards for GCSE's and A Levels are specified within the Format for the Exchange of Examination Related Data (FEERDUM) specification. All EDI processes are supported and maintained annually and include

- ◆ Base Data Import
- ◆ Entry & Amendment Submissions
- ◆ Results Import

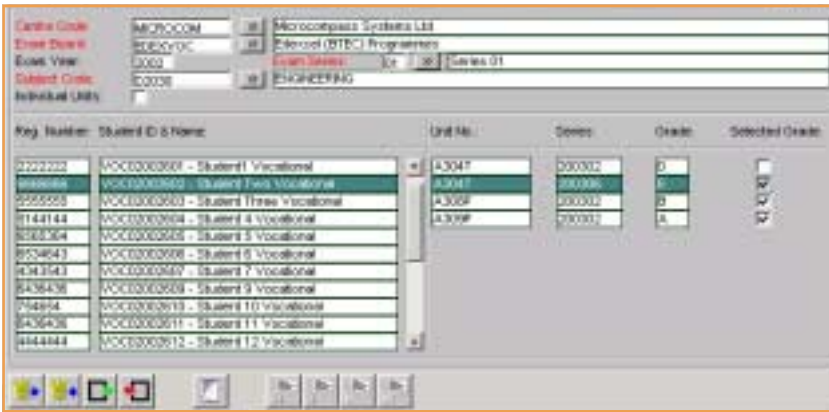
Any Base Data imported can be edited as required. Where Area of Study are mapped to exams then any results imported via EDI automatically update student's ILR/ISR records.

EDEXCEL Vocational Awards

For EDXCEL Vocational awards such as GNVQ's, NVQ's, Keyskills and BTEC qualifications a complete set of message files to and from the centre can be sent. These include:

- ◆ Base Data Import (BDEX & BDNCVQ)
- ◆ Student Registration (REGIST)
- ◆ Registration Acknowledgement (REGACK)
- ◆ Unit Timetables (TIMETB)

- ◆ Test Ordering (ORDERS)
- ◆ Results Acknowledgement (RESACK & TSTRES)
- ◆ Student Results (RESULT)

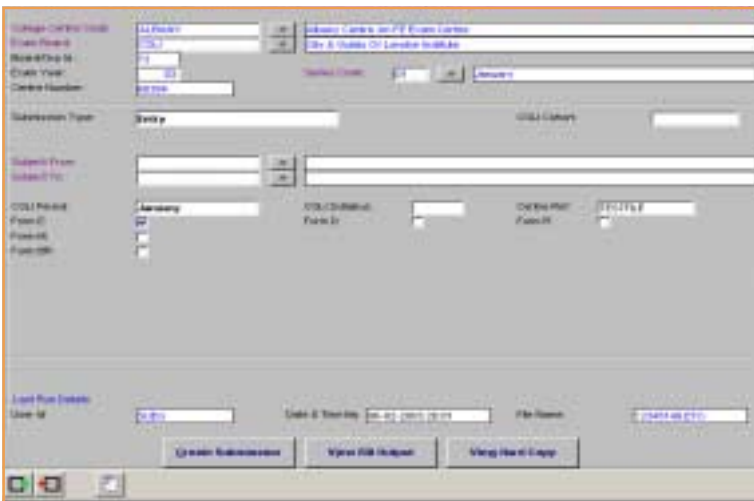
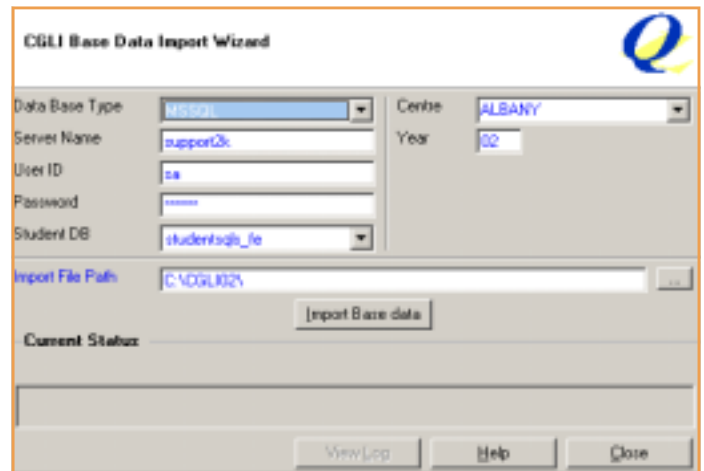


Where students have been entered for unit tests a full history is available including details of the series and unit result. The best result of any attempt can be selected to update the student record.

City & Guilds

The Base Data import for CGLI is now carried out via our new Agresso QL Import Wizard.

There is no need for users to select individual files to process as the software controls the order. If errors are encountered, the software continues to process and prompts the user on completion to view the error log and raise any queries with CGLI or MicroCompass.



The Exam submission screen includes all the electronic formats required by CGLI. The example shown is an Enrolment process but all submission types are supported including Form E, Form D, Form M and Form BR.

The EDI file can be submitted to CGLI either via the Walled Garden or via email to CGLI.

The Centre Reference field can be used by Colleges to sub-divide their submission into cohorts (eg IT, Business etc) and if used, CGLI will return the data in the same blocks.

The form for importing base and results data has been further enhanced to allow the import of CGLI results and the Nominal roll file providing Colleges with the CGLI enrolment number for students previously submitted in Form E.