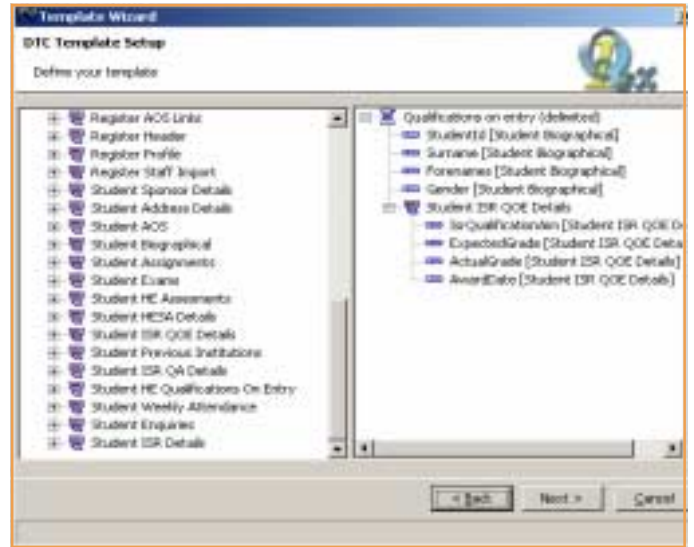


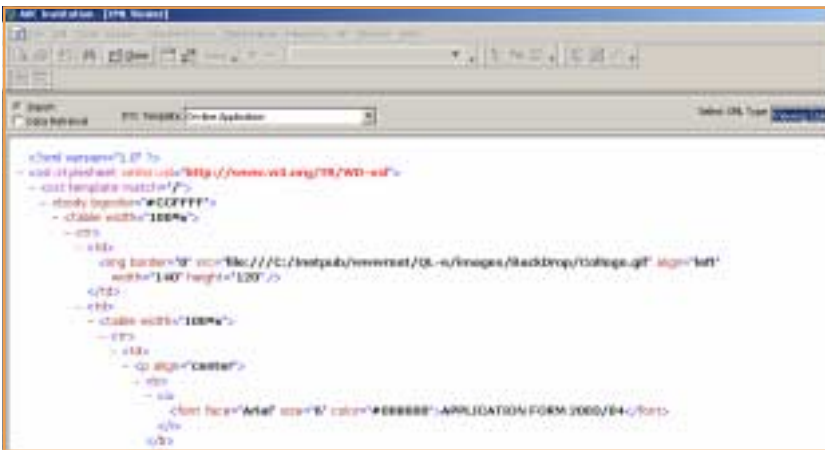


## Template Creation

An import wizard allows users to define data fields to be updated and the format of the import file (e.g. XML, HTML, CSV, text etc). The DTC displays data in groups and fields using 'friendly' descriptions, so simplifying the process and reducing the need for specialist knowledge of the database. The user does not need to know the relationship between tables as the wizard will perform the links automatically as part of the process.



Where required, the template design can include the design of XML style sheets. Through these, users can publish web pages on the internet/intranet to facilitate self-service



## Agresso QL Checkpoint

Checkpoint is an essential tool within the DTC that provides key MIS staff with full control of all data captured via the DTC. It is a central holding area from which all imported data can be reviewed, validated, reconciled and posted into the Agresso QLS database without re-keying. The degree of automation can be complete or partial depending on user preferences and the level of sensitivity of the data. Checkpoint includes a detailed error log from which drill-down error correction can be undertaken and there is a full audit of all imported data.

