

Features:

- Generic interface for interoperability with any third party system utilising industry standard file formats including XML, Excel, fixed width and delimited
- Unlimited user-defined export routines through design wizard using drag and drop technology
- Comprehensive coverage across all aspects of student management including biographical, enrolments, applications, curriculum, examinations & assessments and attendance
- Ability to publish exports within Agresso QL-e and the Data Analysis Centre for user-defined reporting and analysis

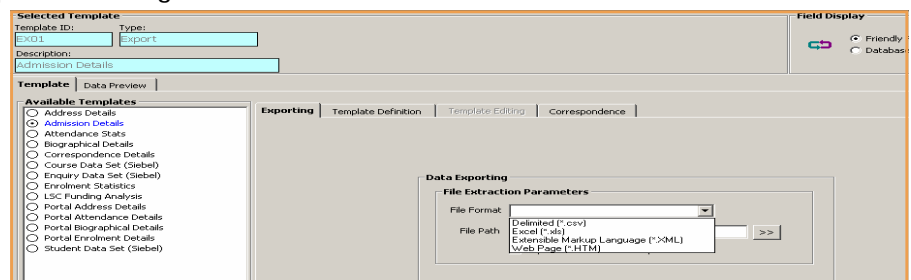
Agresso Ltd provides an alternative method of transferring data out of the main Student Administration system (Agresso QLS).

The Data Translation Centre (DTC) is a powerful enabling tool for interoperability between Agresso QLS and other college systems. It has been designed to allow the export of data into any third party system without specialist knowledge of the Agresso QLS database.

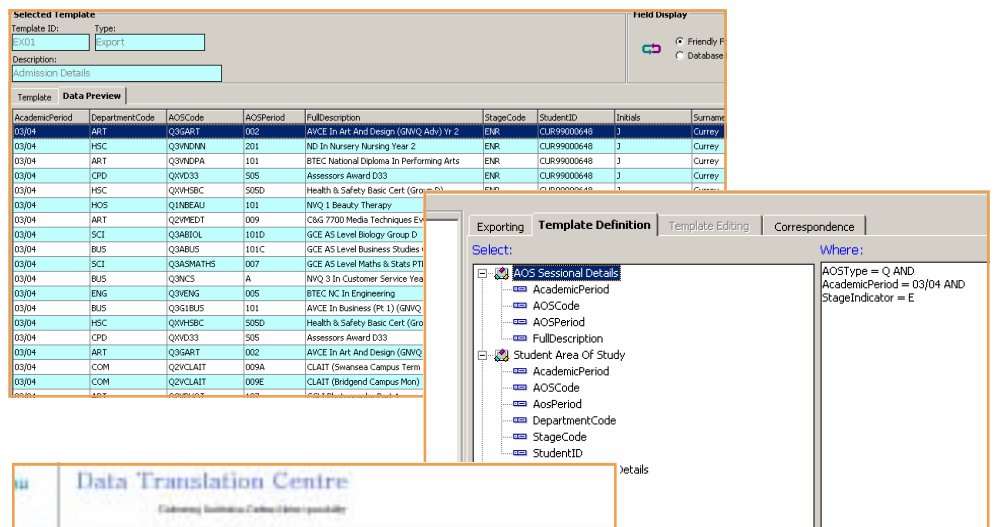
Potential uses include :

- Dynamic or batch exchange of data to another application (e.g. Virtual Learning Environments, Customer Relationship Management, Library systems etc)
- Correspondence management and distribution through mail merge and email
- 'Real time' reporting via Portals, Agresso QL-e, intranet etc
- Data Analysis utilising the 'Janis' grid
- Simple flat file exports in industry standard formats (CSV, text, Excel, XML)

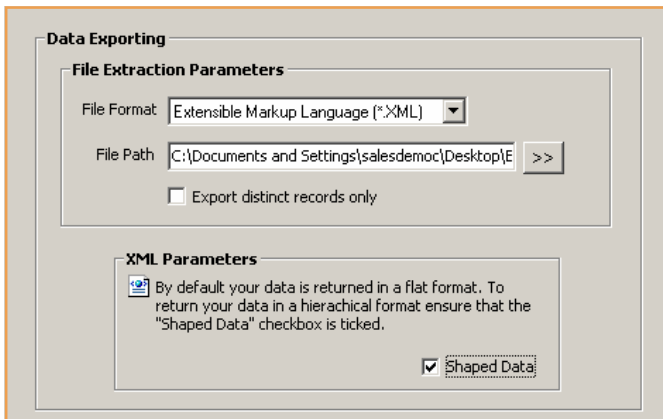
Export Processing



Any export can be viewed within the powerful analysis grid for aggregation and subtotalling.

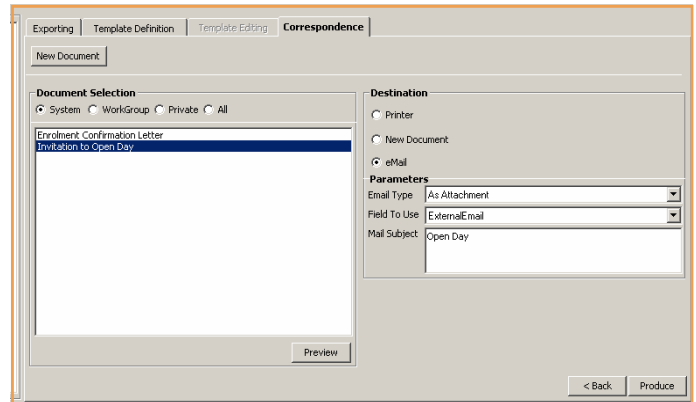


Alternatively, results can be published via the web using standard web tools including Microsoft Sharepoint and Agresso's Agresso QL-e web module.



The DTC also simplifies the process of communication with students. Unlimited mail merge letters can be defined. These can either be printed or distributed by email.

The DTC also provides a user-definable but standard method of providing interoperability to virtual learning environments utilising IMS XML Specifications and integration to Customer Relationship Management (CRM) such as Seibel and Microsoft . Where required, this integration can be dynamic by using Agresso's unique 'directXML' solution.



Template Creation

An export wizard allows users to define data fields and default selection criteria for extracting, analysing and publishing data. The DTC displays data in groups and fields using 'friendly' descriptions, so simplifying the process and reducing the need for specialist reporting skills. The user does not need to know the relationship between tables as the wizard will perform the links automatically as part of the process. The final stage is to define filters or selection criteria, each of which can be varied by users at runtime thus providing multiple reporting options from a single export template.

