

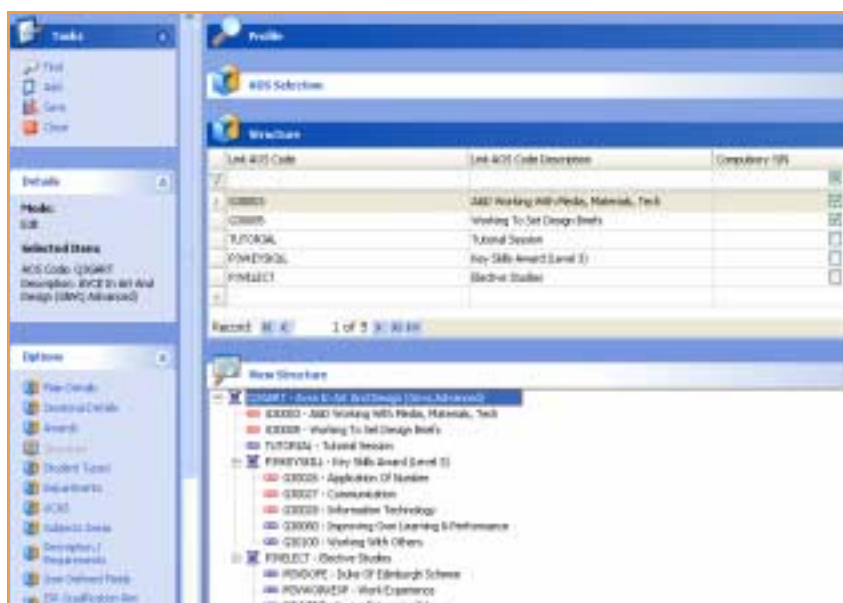


The Curriculum module is the foundation upon which the whole student record is built. This module has been designed with both the scope and flexibility to model your full course offering and thus supports the delivery of the curriculum of the 21st century including modularisation, credit based delivery/assessment and eLearning.

It integrates dynamically to the Admissions, Registers, Achievements and ILR modules, thus ensuring that all relevant parts of the system are in step and facilitates efficient data processing through wide ranging defaults and single data entry. The levels of integration are totally configurable to give core practitioners full control and ensure Agresso QLS supports business processes rather than prescribing them.

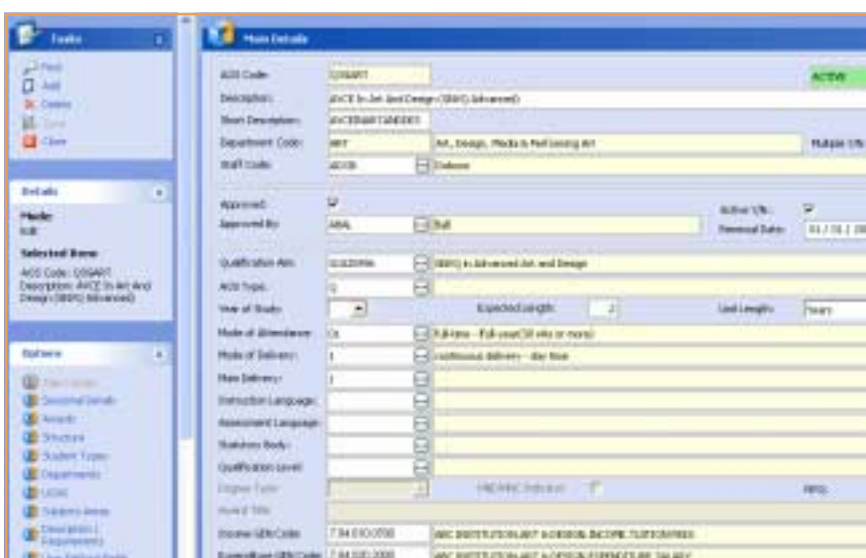
## Unitised Curriculum

The Curriculum module allows every element of learning offered to be represented by a unique area of study (AOS) code. The AOS code list thus created can then be structured into levels, with each level representing the type of course, e.g. programme, main qualification, module or unit. Links can be created between AOS codes at any level to define default learning programmes, with lower level courses used in many different programmes. Such an approach maximises the use of standard "chunks" of learning in the curriculum definition. It also simplifies the admissions process by offering each student a default programme which can be individually tailored by the selection of optional modules.



## Qualification Aims Database

The LSC's qualification aims database is embedded within the Curriculum module and this is maintained by Agresso. Courses at any level can have qualification aims attached so that a learning programme may lead to a number of recognised awards.

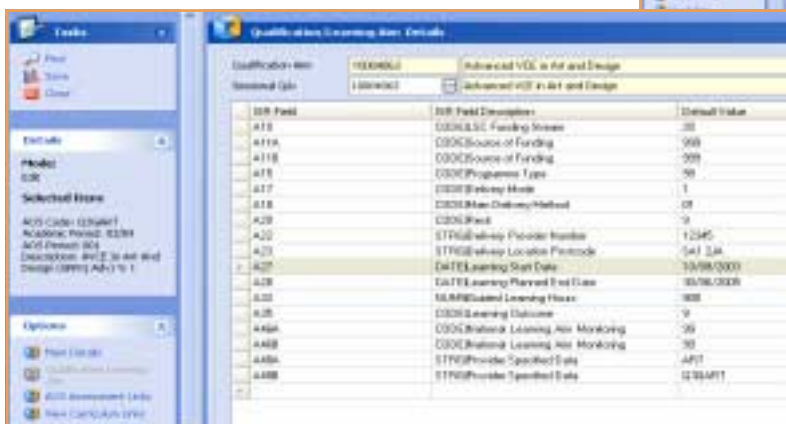
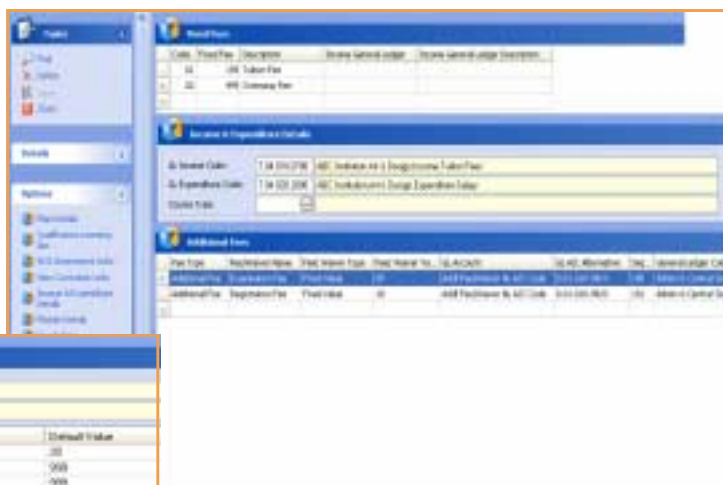


## Course Definition

A unique, institution-defined AOS code is used to identify each course offered. During the planning stage, courses can be flagged as inactive to prevent use by admissions or student services staff. A wide range of information can be recorded against each AOS code to inform the many institution processes that involve the course file. These include ILR default values, course fees, delivery costs, prospectus details as well as data used to classify the course, e.g. department, staff responsible, active date range, location, places available etc.

## ILR Data Collection

Some ILR data is specifically related to the course on which the student is enrolled, particularly fields in the qualification aims dataset. To assist the process of data collection, any number of ILR data fields, complete with a validated default value, can be set up against a course. Upon enrolment, each student's ILR record is flooded with these default values.



## Income Analysis

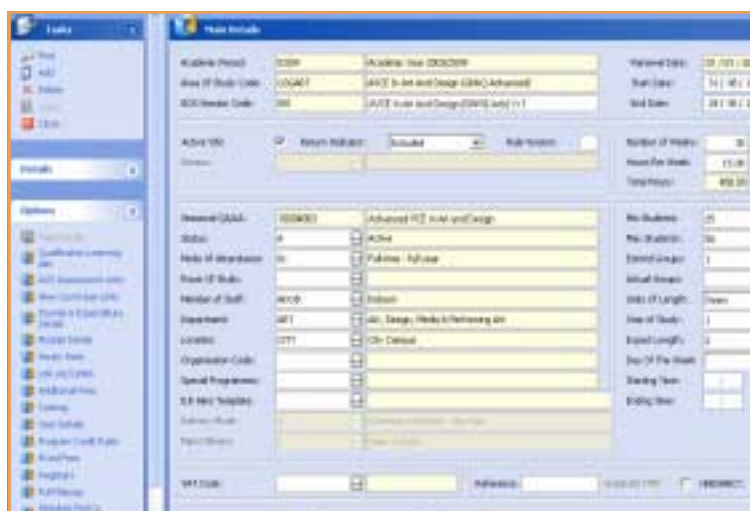
Any number of tuition fees can be defined for each course and these can be fixed amounts, hourly rates or a combination of both. Any number of additional fees and waivers specific to the course can also be defined. For each fee, a valid cost centre income code can be attached so that during the fee build process all fees are automatically analysed to the appropriate account for income purposes. Institution-wide additional fees and waivers can also be created which are available across all courses.

## Multiple Occurrences

Where the provider is appealing to the widest possible audience and particularly if a unites curriculum structure is employed, many courses will be offered at multiple times, in multiple locations and as part of multiple programmes. Once the course definition has been created, this can be copied any number of times to create multiple sessions. It is against the session that the academic year and default start/end dates are entered, if desired, and against which all enquiries, applications and enrolments are recorded. These course sessions can span academic years if necessary and this copy facility can also be used to roll forward the curriculum from one year to the next.

## Student Tracking

The Curriculum module also provides the basis for the tracking of student progression in a number of ways. Integration between the Curriculum module and the Registers and Achievements modules enables the provider to define links between courses & class meetings and courses & examinations. For each individual course enrolment, a framework is thus established to track students by registration stage, attendance pattern and academic attainment. Where a more detailed attainment record is also required, tutor-based assessment can be recorded against each course code. If necessary, assignments can be defined against AOS codes at any level of the curriculum and tutor marks and comments recorded against these.



## Course Effectiveness

Integration with the Admissions module creates a record of all enquiries, applications and enrolments against each course occurrence, together with progression statistics between each stage.