

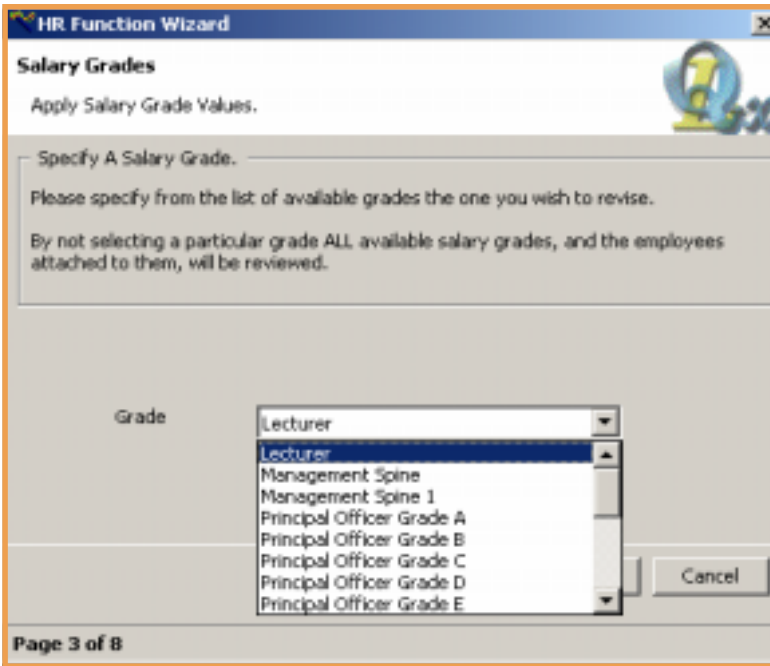


Agresso QL Personnel captures the majority of the information required to produce a payroll, therefore eliminating the need for duplicate entry. Where required this can be output to any third party payroll package or bureau service. Alternatively the Payroll module can provide full payroll processing.

Category	Description	Gen Code	Date	Rate	Units	Val
Business Studies	Charity Deduction		18/09/2001	-25.00	1.00	
Business Studies	Honorarium Payment		18/09/2001	250.00	1.00	
Business Studies	Salary	0.00.020.2000	30/04/2001	3,404.33	1.00	
Business Studies	ACM Union Fees	0.00.020.2000	1990			

Any number of payments or deductions can be defined using 'Payroll Codes' including the creation of permanent and temporary adjustments. These are user-defined and rule-based and so control all payroll scenarios.

Category	Description	Gen Code	Date	Rate	Units	Val
Business Studies	Charity Deduction		18/09/2001	-25.00	1.00	
Business Studies	Honorarium Payment		18/09/2001	250.00	1.00	
Business Studies	Salary	0.00.020.2000	30/04/2001	3,404.33	1.00	
Business Studies	ACM Union Fees	0.00.020.2000	1990			



Global changes can easily be applied to the whole payroll or to a range of employees. If required multiple pay grades and scales can be created which can be applied and managed centrally.

This includes incremental scale increases and cost of living awards. Automated processes allow for the easy management of Statutory Sick and Maternity Pay, along with other payments and deductions such as overtime, regional weightings, banded deductions and hourly contracts.

Through Payroll Templates payroll frequencies can be defined including weekly, monthly etc. Payroll data can be allocated across multiple cost centres and integration with Agresso QL Financials for commitments and actual payments is dynamic. Payments can be made by cash, cheque or BACS transfer and payslips can be designed to user requirements.

A full suite of standard reports have been designed to audit each monthly payroll run and for statutory returns.

Journal Summary - 0 PM 26/09/2001
Printer Profile: Page Printer

Employee	Gross	Pension E'ee/E'er	-- National Employee Tax / Rebate	Insurance -- Employers / Rebate	Employers Costs	Other Deds./Pants	Net Pay	SSP - This Per	This Per Paid I
Administration (24)			Employee	Employer					
Adjustment - positive			27.63						
Bonus Award			500.00						
Expenses			35.00						
Over Time - Flat Rate			60.00						
Petrol			23.50						
Salary			48,942.98						
Gross Pay			49,569.11						
Charity Deduction			45.00						
TAX CREDIT - Disabled Person			-35.00						
ACU Union Fees			40.00						
National Insurance			98.20	1,885.00					
NI Rebate				-210.45					
Tax			7,395.73						
Total Deductions			7,543.93	1,674.55					
Total Costs			42,045.18	1,674.55					
Net Pay			42,045.18						