



Agresso's Project Management and Accounting (PMA) system was designed with the full collaboration and consultation of a number of institutions. This has allowed the product to meet key criteria for the successful implementation of a sophisticated system for the control of all activity in an institution that relates to research and grant projects.

In order to deliver such a product Agresso had to take account of the different environments that institutions have. The product can deliver functionality via a web-based interface or via windows based screens. It has extensive integration facilities that allow it to seamlessly operate with different financial and human resource systems.

An optional workflow system is provided to supply full control of all stages of a project from inception to completion.

FEATURES OF PROJECT MANAGEMENT AND ACCOUNTING

PMA provides the mechanism for the management and monitoring of each project from inception through application and proposal, award and finally completion. The system possesses simple yet powerful screens that allow the user to match the profile of any complex project structure whilst at all times keeping each project's key components visible and pertinent.

Data such as Project types, HESA categories, Unit of Assessment, Funding Bodies, Principle Investigators, cost profiles, key dates, Je-s data, Framework 6 data etc. can all be stored against each project. All changes to project data are fully auditable.

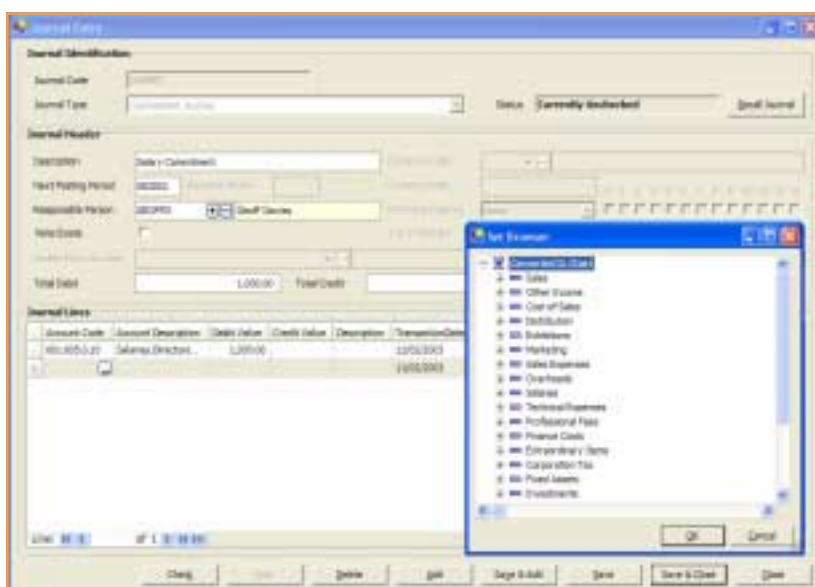
Multiple hierarchical posting and reporting charts ensure that the diverse nature of Departmental, Institutional and Awarding Body reporting structures can be mapped and controlled within the system. Charts can reflect and support the treatment of collaborative projects including multi-organisation/institution, multi-school and multi-department. Each chart structure also relates award and application values held against individual cost profiles that are fully integrated to the General ledger. The integration may be complete or subject to a restricted set of general ledger codes as appropriate.

Supplementary awards can be declared, tracked, and audited. They can either be pooled with an existing award whilst still keeping data separate or they can be declared as separate projects and combined via reporting charts.

PMA allows the creation of any new application to be cloned from existing project profiles and can include existing chart and cost structures if required. In addition data can be automatically drawn directly from existing systems in the institution and updated on any time granularity required.

Significant security features control access for data capture and recording, either via the web or via windows, whilst its integration with the workflow engine ensures effective and highly efficient authorisation procedures.

PMA allows all types of financial transactions to be processed through the Project Ledger as well as to the General Ledger including: -



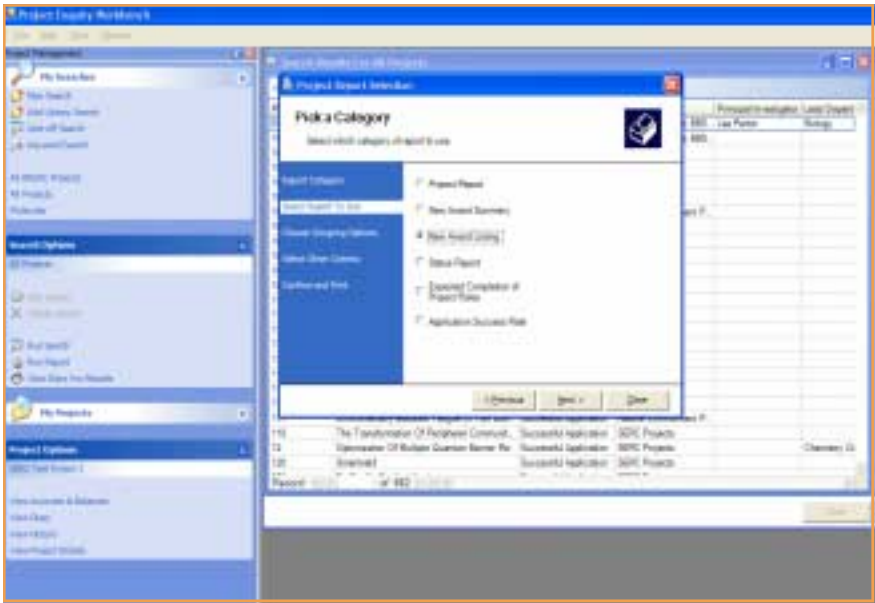
- ◆ General/Project Ledger Journals including commitment journals etc.
- ◆ Automatic Overhead Journals
- ◆ Purchase Orders (internal or external), Order completions, etc.
- ◆ Account Payable invoices and credit notes
- ◆ Stock receipts issues and adjustments
- ◆ Sales invoices including cost recovery, credit notes etc.
- ◆ Cash book payments including petty cash etc.

All transactions within the Project Ledger can be drilled down to the source entry document using a sophisticated document tracking mechanism

Indirect cost transactions are generated automatically as part of the month end processing according to rules established within the cost profiles for each project, however these can be entered directly by the user should the project require so.

Cost statements can be produced to support periodic claims for each project and these can be produced in a format suitable for issue to sponsors and funders. Suggested billing schedules (subject to edit) producing automatic periodic invoices can be produced. These can be based on predetermined profiles or the actual costs incurred for each period and all processes result in the appropriate posting entries within each module.

The module possesses the ability to generate the appropriate entries for prepayment and accruals within the Project Ledger for posting within the General ledger for period and annual reporting purposes. Usually of a reversing nature these journals ensure that the General ledger at all times maintains as transparent a view as possible of appropriate costs to the institution.



PMA is fully interoperable within all desktop products allowing for ease of transfer of any enquiry and reporting screens to such products. Options to export the data to Word document templates in the required formats for funding bodies and other statutory requirements are also available.

As well as user defined reporting capabilities the Project module is equipped with 14 standard management reports with many user configurable reporting criteria. The reports include Key Performance criteria and forecasting.

These powerful mechanisms allow individual bodies to make accurate realistic judgements on each project's progress and its ultimate success or failure.

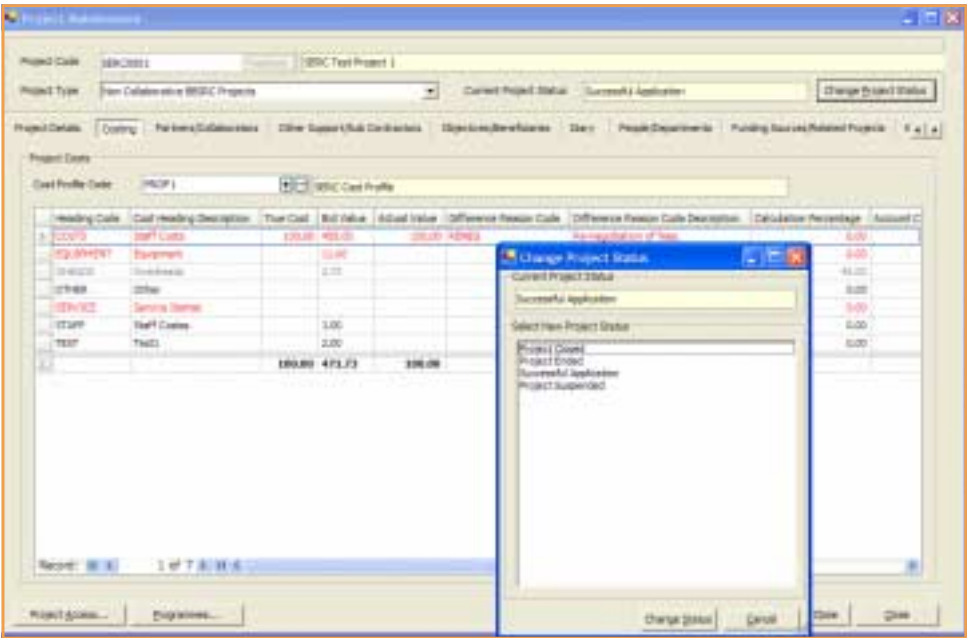
WORKFLOW

In addition PMA's highly adaptable workflow system ensures that the institutions management processes can be replicated during the projects lifecycle. This ensures that the tracking of all projects through its various stages by associated bodies can be effective and controllable.

The system can be set up to deliver user defined web based forms to collect all data and to track a project through all of its stages.

Also there is an optional workflow engine that allows complex authorisation and notification processing to be set up. The engine gives full integration to mail systems, orchestration and integration tools and hence gives the institution a complete ability to inter-operate with any existing management systems. The set up of the engine is all achieved through a simple point and click interface.

Users are warned of actions that they are required to complete either by an always-on windows client or by a web based client.



This sophisticated facility encourages larger research groups to become more involved and thus exercise greater control over any number of projects.

INTEGRATION

PMA has been designed to ensure that it can inter-operate with third party financial management and human resources products. The interfaces provided allow for two-way provision of data. The integration interfaces are auditable and re-active. If there is any failure in the interface, either a failure at the technical level or because business rules have been violated, then designated users can be informed via e-mail or SMS.

PORTAL DELIVERY

Allowing PMA to be delivered via a portal ensures that the largest possible take up by staff across the campus. It removes the issue of hardware capability and provides an easy to understand interface.

The portal also gives the benefit of

- ◆ Document collaboration and management facilities
- ◆ Collaboration services
- ◆ Subscription and publishing services
- ◆ News and user interest groups
- ◆ Full reporting via the web interface
- ◆ Customisable interface by user or workgroup

The screenshot displays the PMA software interface, which is a complex web-based application. It features a sidebar on the left with navigation options like 'Project Details', 'Project Lists', and 'Project Information'. The main area contains several data tables and sections:

- Project Lists:** A table with columns for Project ID, Project Name, External Reference, Budget, Start Date, End Date, Project Type, and P.A. Specialist/Other Staff No.
- Project Details:** A section for a specific project, including fields for Project Name, Project Type, Project Status, and Project Information.
- Project Address Book:** A table with columns for Name, Address, Phone, and Email.
- Project Information:** A section for project details, including Project Name, External Reference, Project Status, and Project Type.