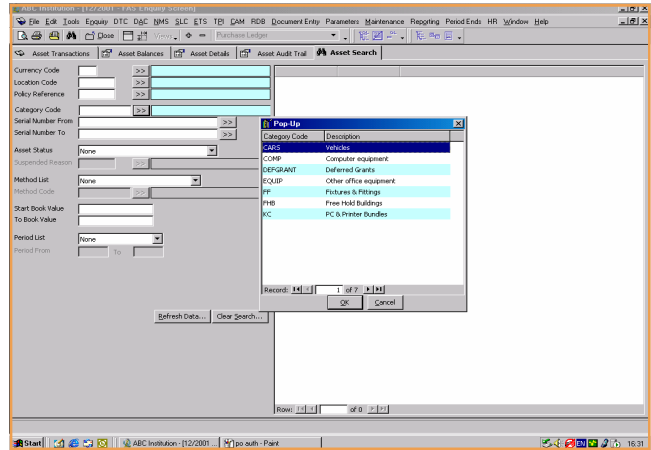


## DEPRECIATION METHODS

Agresso QL supports the following depreciation methods:

- Straight line by percentage
- Straight line by periods
- Reducing balance by percentage
- Sum of digits (e.g. rule of 78)
- Actuarial
- User-defined profiles
- Depreciation calculation



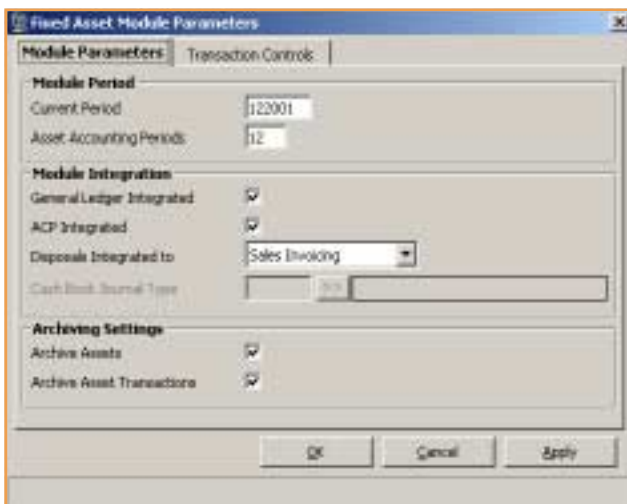
Automatic calculation can be performed in any period. If periods are missed then Agresso QL is aware of this and will automatically post the correct depreciation for the missing periods. Hence the depreciation calculation can be performed quarterly, though the posting values will be calculated for the three intervening periods. The starting period for depreciation for an item can be as many periods prior to post acquisition as is required. This can be defined by asset type.

## INDIVIDUAL ASSET MULTIPLE DEPRECIATION RATES

Each individual asset can hold up to two depreciation methods for reporting purposes. For example, for financial accounting purposes, straight line over three years, while maintaining a 25% reducing balance for Corporation Tax purposes.

## INTEGRATION TO THE GENERAL LEDGER

All movements on an asset can have their own defined journals to the General Ledger. This definition is embodied within the fully parameterised asset journal mechanism. Each individual asset's depreciation can be apportioned across multiple General Ledger codes based on percentage or statistics.



## INTEGRATION TO ACCOUNTS PAYABLE AND PURCHASE ORDERS

The Fixed Asset module can be fully integrated to the Accounts Payable module and the Purchase Ordering module. Hence, if an invoice is received, the asset or add on to an existing asset, can be registered automatically.

## INTEGRATION TO ACCOUNTS RECEIVABLE AND SALES INVOICING

The Fixed Asset module can also be fully integrated to the Accounts Receivable module and Sales Invoicing module. Hence, if an asset, or part asset is disposed, an invoice can be raised and the Accounts Receivable module subsequently updated.

## HISTORY

A full transaction history is maintained for each asset for as long as required. This includes long life assets such as buildings. All this history is available on all screen enquiries and all reports.

## ASSET MOVEMENTS

Agresso QL supports the following:

- Acquisitions
- Disposal
- Add-ons
- Splits
- Amortisation
- Write-offs
- Part disposals
- Revaluations
- User-defined information

Each asset has a fully maintainable, user-defined section of data. This data can be reported and enquired upon. This allows a multitude of management reports to be produced. Examples are:

- Car maintenance/MOT
- Annual maintenance
- Insurance company and policy number and reminders
- Staff member ownership
- Insurance values

All assets have an insurance value that can be entered against them. This can be globally updated for inflation reasons and policy reviews. Asset group insurance totals are available for department and section reporting.

## PROFIT AND LOSS ON ASSET SALE

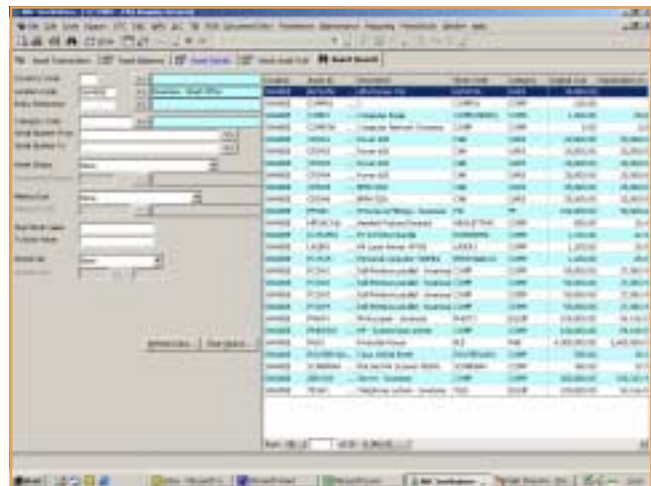
Automatic calculation of profit/loss on each asset sale is identified and posted at the disposal date to the General Ledger.

## FOREIGN CURRENCY

Foreign currency asset values can be maintained for each asset and are available for enquiry and reporting purposes. Transfers of assets between countries, with the relevant change of foreign currency value, are automatically catered for.

## LOCATION

All assets can be registered to a location. Full reporting on locations and enquiries are available. This can be used in conjunction with the user-defined information held against an asset to produce schedules of maintenance by location. Plant location registers can also be produced by this method.



Asset ID	Description	Location	Value	Cost	Depreciation	Insurance	Notes
10001	Car - Ford Focus	London	10000	10000	0	0	
10002	Car - Honda Civic	London	8000	8000	0	0	
10003	Car - VW Golf	London	12000	12000	0	0	
10004	Car - Toyota Auris	London	9000	9000	0	0	
10005	Car - Nissan Leaf	London	15000	15000	0	0	
10006	Car - Mercedes C-Class	London	20000	20000	0	0	
10007	Car - BMW 1 Series	London	11000	11000	0	0	
10008	Car - Audi A3	London	13000	13000	0	0	
10009	Car - Skoda Octavia	London	10000	10000	0	0	
10010	Car - SEAT Ibiza	London	8000	8000	0	0	

## JOURNALS

Asset journals can be performed to adjust values in exceptional circumstances. These journals are fully user-defined and can be set to update the General Ledger if required.

## ASSET DIARY

The module is provided with a powerful asset diary that will prompt actions and planned events at the appropriate time.