

# General Ledger V4 Enquiry

The Agresso QLF Web Portal has been introduced as a means of delivering the desired distributed access using browser-based technology. It is more appropriate to the needs of occasional users, extremely flexible yet simple to deploy and conforms to all the business rules and restrictions defined within the core Agresso QLF system

The main element of the Agresso QLF Web Portal is a series of Web Parts, each of which provides a piece of functionality in much the same way as a Workbench in core Agresso QLF does.

Currently most institutions produce paper base budget reports for departmental budget holders, which by the time the user receives the report could be out of date.

There is no better way to encourage budget holders to work within budget guidelines than to give them real time on-line access to their current budget position. The Budget Enquiry web part does just this by allowing any user access to his/her range of general ledger account codes across any range of periods. Data is displayed in a similar format to the QL-x Workbench at the highest level of the chart first with the ability to expand each level to expose the lowest posting codes.

**General Ledger Account Criteria**

**Account Selection**

Account Type:  Short Code:

Include Accounts With Zero Budgets/Balances:  Code Section:

**Balance Selection**

Balance Type:  Period Type:

Period From:  Period To:

**Display Options**

Description Type:  Budget Threshold:

Include Commitment In Variance:

---

**General Ledger Accounts - MAIN**

Drag a column header here to group by that column

Account Code	Level Code 1	Level Code 2	Level Code 3	Level Code 4	Opening Bala...	Closing Bala...	Credit YTD	Debit YTD	Co
0.01.020.1500	0 - Admin & Fi...	01 - Administr...	020 - Expendit...	1500 - Station...	0.00	4,565.09	0.00	4,565.09	
1.01.020.1500	1 - Basic Medic...	01 - Administr...	020 - Expendit...	1500 - Station...	0.00	2,990.27	0.00	2,990.27	
1.01.050.1500	1 - Basic Medic...	01 - Administr...	050 - Overheads	1500 - Station...	0.00	0.00	0.00	0.00	
1.02.050.1500	1 - Basic Medic...	02 - Education	050 - Overheads	1500 - Station...	0.00	1,175.00	0.00	1,175.00	
1.03.050.1500	1 - Basic Medic...	03 - Projects ...	050 - Overheads	1500 - Station...	0.00	0.00	0.00	0.00	
1.04.050.1500	1 - Basic Medic...	04 - Projects A...	050 - Overheads	1500 - Station...	0.00	0.00	0.00	0.00	
1.23.050.1500	1 - Basic Medic...	23 - Computer...	050 - Overheads	1500 - Station...	0.00	0.00	0.00	0.00	
2.01.020.1500	2 - Registry	01 - Administr...	020 - Expendit...	1500 - Station...	0.00	11.75	0.00	11.75	
2.01.050.1500	2 - Registry	01 - Administr...	050 - Overheads	1500 - Station...	0.00	1,057.50	0.00	1,057.50	
2.02.050.1500	2 - Registry	02 - Education	050 - Overheads	1500 - Station...	0.00	0.00	0.00	0.00	
2.03.050.1500	2 - Registry	03 - Projects ...	050 - Overheads	1500 - Station...	0.00	0.00	0.00	0.00	

The live enquiry will only display accounts to which the user has access, whilst a number of selection criteria are available to help the user with a specific search. For example, the user may wish to enquire on account balances for the current period or only those with a balance.

For further on screen analysis the results can then be sorted or grouped using the group by facility.

If the user wants to see transactional information for a particular balance they can drill down to the associated transactions.

**General Ledger Accounts - MAIN**

Level Code 2 ▲

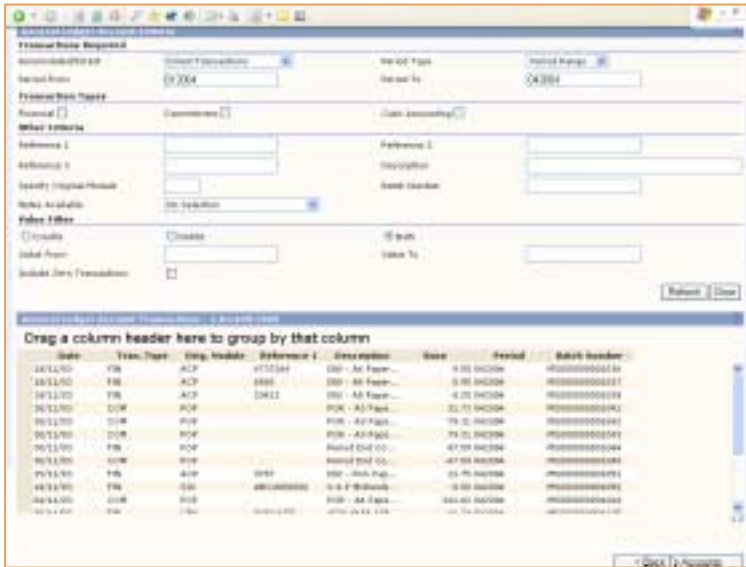
Level Code 2 : 01 - Administration inc Grants (8)

Account Code	Level Code 1	Level Code 3	Level Code 4	Opening Bala...	Closing Balance	Credit YTD	Debit YTD ▲	Commitmen
1.01.050.1500	1 - Basic Medic...	050 - Overheads	1500 - Stationery	0.00	0.00	0.00	0.00	0
3.01.050.1500	3 - Public Relati...	050 - Overheads	1500 - Stationery	0.00	0.00	0.00	0.00	0
5.01.020.1500	5 - Technology	020 - Expenditure	1500 - Stationery	0.00	0.00	0.00	0.00	0
2.01.020.1500	2 - Registry	020 - Expenditure	1500 - Stationery	0.00	11.75	0.00	11.75	0
3.01.020.1500	3 - Public Relati...	020 - Expenditure	1500 - Stationery	0.00	65.00	0.00	65.00	0
2.01.050.1500	2 - Registry	050 - Overheads	1500 - Stationery	0.00	1,057.50	0.00	1,057.50	0
1.01.020.1500	1 - Basic Medic...	020 - Expenditure	1500 - Stationery	0.00	2,990.27	0.00	2,990.27	356
0.01.020.1500	0 - Admin & Fin...	020 - Expenditure	1500 - Stationery	0.00	4,565.09	0.00	4,565.09	2,261

Level Code 2 : 02 - Education (3)

Level Code 2 : 03 - Projects Within Department (3)



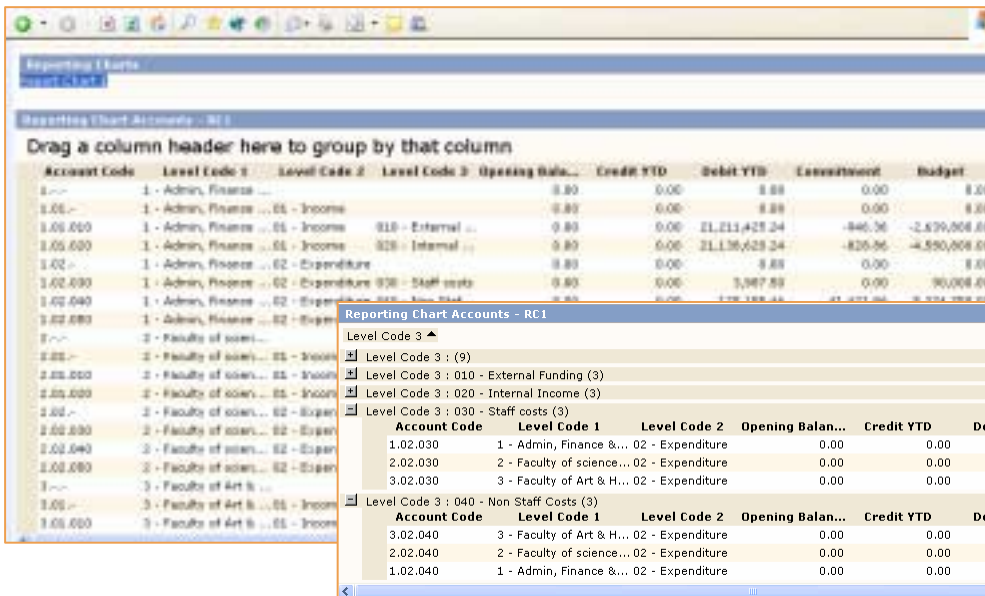


Within the transaction screen users can use the selection criteria to narrow their search. For example, they may only be interested in commitment transactions or those between certain values. Further analysis can be achieved using the sorting and grouping facilities available.

### Reporting Charts

The V4 General Ledger provides multiple hierarchical reporting charts in addition to the General Ledger posting chart and Project charts. Any number of reporting charts can be defined; each may contain up to twelve levels of analysis and can comprise alphanumeric codes. Reporting charts can therefore be utilised to provide summary and detailed reports for departments, cost centres, accounts, etc. The needs of evolving management structures can therefore be easily catered for within the reporting structures and frequent changes within an organisation's structure can be adapted easily, without the need for a change in the posting chart.

Calculation sets can be defined to include or exclude project and/or general ledger codes. These can include masks or ranges of codes irrespective of their position within the posting chart. Calculations can then be performed on the individual data automatically as it is reported on or viewed.



Once the reporting charts have been created centrally devolved users can view the information via the finance portal.