



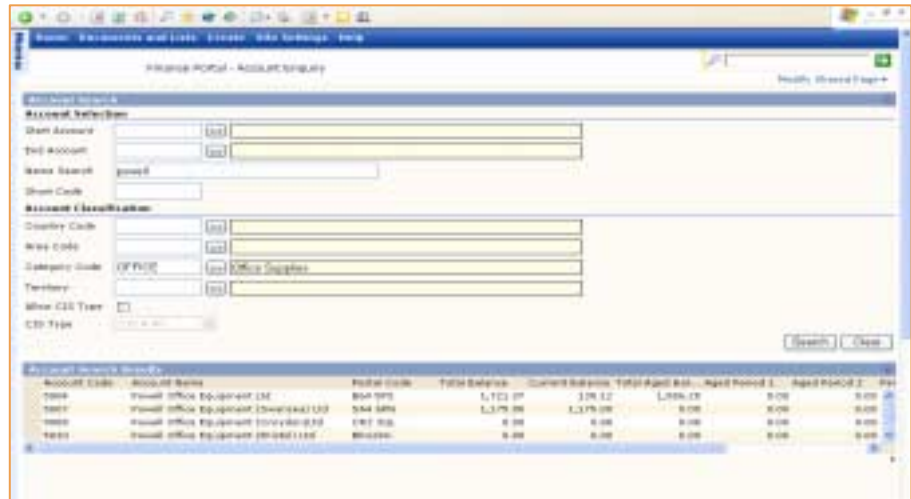
ACP-ACR Account Enquiry

The Agresso QLF Web Portal has been introduced as a means of delivering the desired distributed access using browser-based technology. It is more appropriate to the needs of occasional users, extremely flexible yet simple to deploy and conforms to all the business rules and restrictions defined within the core Agresso QLF system

The main element of the Agresso QLF Web Portal is a series of Web Parts, each of which provides a piece of functionality in much the same way as a Workbench in core Agresso QLF does.

The account enquiry is available for both the purchase and sales ledger depending on a user's access. A number of search facilities are available to help a user find the appropriate account.

The enquiry is useful to help users find certain types of suppliers/customers by use of the analysis codes.



Doc Type	Transaction Date	Description	Reference 1	Gross Value	Outs Bal	Payment Due	Allocation Status	Posting Period
INV	22/05/2004	Powell Office Equipment Ltd 54646		15.06	15.06	30/06/2004	N	200404
INV	30/11/2003	Powell Office Equipment Ltd pow30.9		11.16	11.16	30/11/2003	N	200404
INV	30/11/2003	Powell Office Equipment Ltd st3452		92.24	92.24	30/11/2003	N	200404
INV	25/11/2003	Powell Office Equipment Ltd TEST		15.06	15.06	30/11/2003	N	200404
INV	01/02/2000	Powell Office Equipment Ltd 5948		1586.25	1586.25	30/06/2001	N	200404

For example, before a user enters a supplier account request they could check that the supplier does not already exist, or if they want to know which suppliers they can use to order stationery.

From a customer point of view, a lecturer may want to enquire on a student's account to see if they have any outstanding debt.

Once a user has found the appropriate account they can then view transactional details relating to the account.

